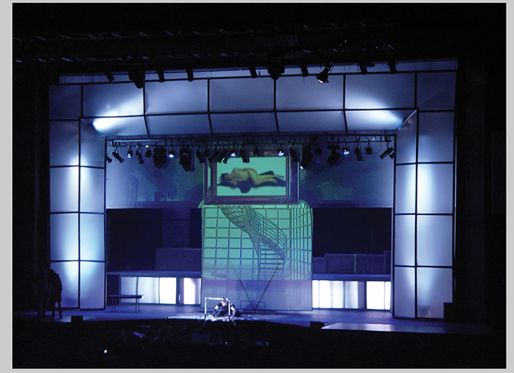
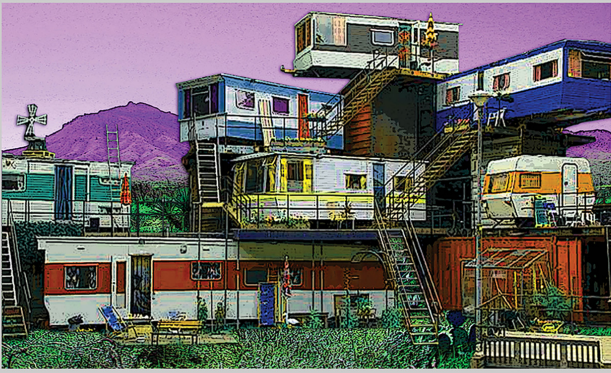


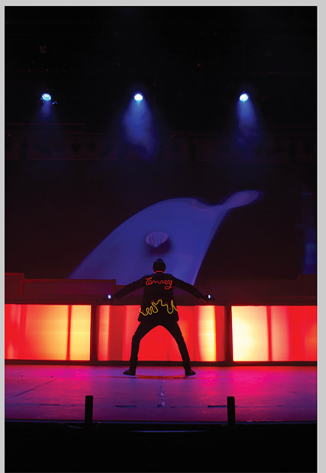
MICHIGAN STATE UNIVERSITY DEPARTMENT OF THEATRE



The Who's Tommy
by Pete Townshend
and Des McAnuff

Scene Design by Kirk Domer

Directed by Rob Roznowski
Gaming Design by Dan Marsh
Lighting Design by Ted Rhyner
Costume Design by Lori Sands



THE ARTFUL MELDING OF THEATRE AND TECHNOLOGY

The use of live actors inhabiting a virtual space has become a compelling and necessary step in leading edge performative theatrical design and has eschewed traditional scenery for mediated environments. Virtually updating the "Pinball Wizard" described in the seminal song from the show included modern gaming associations including more physical interaction between player and environment.

Domer, Kirk A., and Rob J. Roznowski. "Virtual Design in Theatrical Contexts: Live Actors Inhabiting a Virtual Space", Design Principles and Practices: An International Journal, Vol. 3, 5, pp 81-94 Peer-reviewed article CG Publishers, 2009

